

PRODUCT CATALOG
2020 – 2021

Dear business partners and friends,

Today, after almost two decades of hard work we can confidently say that we have managed to create a steadily developing production and sales group in a wide range of products in four Central European countries with export to all Europe. We focus on the special added value product range, including ETICS thermal insulation systems, sloping and flat roof accessories, dry construction, drainage, and especially a very strong range of selected insulating materials.

Gunnex Group, with an annual turnover of more than 40 million Euro, now operates in Czech Republic, Slovak Republic, Poland and Romania in the form of wholesale warehouses, production units and foreign markets in the export of its products. Strong financial background enables us to maintain a high stock of products without compromising on quality. Besides our own production we represent the leading European manufacturers. The range of products, stock and fast delivery service make us one of the leading suppliers on the market.

We are looking forward to future cooperation!
for Gunnex

Mgr. Adam Kubarski
CEO Gunnex group

Customer service

Our Customer Support team is available to assist you with your orders, delivery dates and promotions.

Call **+421 908 380 316** we accept orders via the central collection email info@gxprofiles.com.



Main advantages of our offer:

- Short lead times
- Delivery of tailor made products
- Deliveries of "private label" goods
- Technical and consulting support, we offer tensile tests on the building construction and many others



- Technical calculations
- Support and advice through a developed network of regional business and technical consultants
- Customer service ensuring full information on the status of orders and delivery dates
- Marketing sales promotion
- Training and presentations for our customers and clients

Technical support

Our products are provided with technical support in the form of consultancy and certificates as well as through practical tests on building sites. Our engineers are ready to respond quickly to your technical questions.

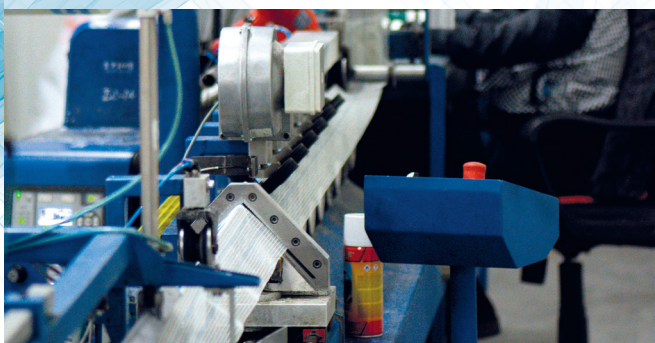
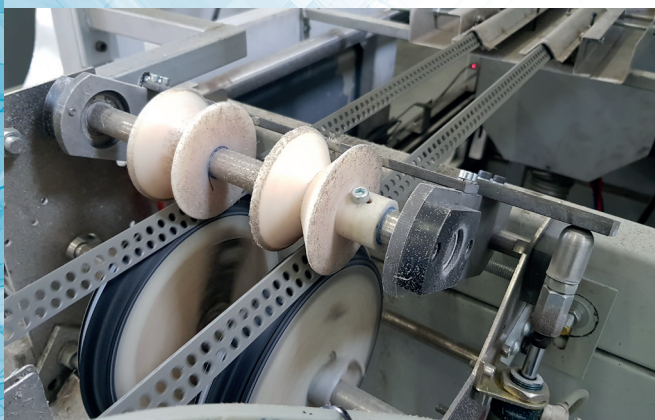
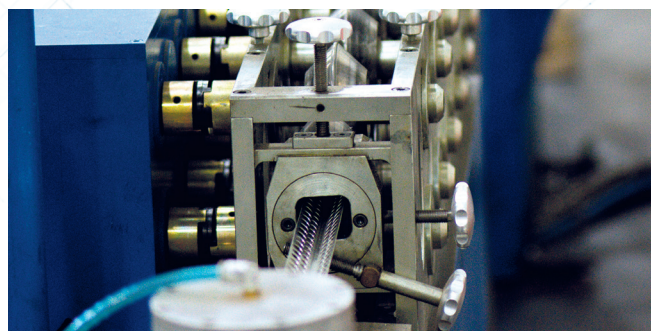


www.gxprofiles.sk

Productions **GXProfiles**[®]

Gunnex group company

Several years ago, we laid the foundations of the production part of our group, the company GXProfiles SK s.r.o., which deals with the processing of plastics and metals, especially the accessories for ETICS thermal insulation systems. With planned expansion of plastic production in Mstětice near Prague, we want to rank among the leading Central European producers of this assortment and supplement it with other products related to the construction industry. We see a great potential for further development in production and we will be happy to inform you about our next steps.



Our modern production unit located in Beluša, Slovakia is equipped with extrusion technology, that enables production of all kinds of PVC profiles from simple corners to more complicated window profiles and base profiles. We use the best quality granulates, mainly from German primary production. This plastic manufacturing is complemented by metal profile presses for production of both galvanized and aluminum metal profiles. Products that require assembly with lining or other material are produced either directly by coextrusion process or by gluing on several adhesive lines. We exclusively use adhesive from the world's leading manufacturers. In addition to our standard product range, we can also produce products according to the customer's request and preferences. The products are packed in a high quality cartons labeled with the date of manufacture and the batch number. Monitoring and maintaining the quality is our highest priority. Products are regularly tested and measured. In addition to our own production, we externally cooperate with several leading European manufacturers on products specifically developed for Gunnex Group and our customers. Quality always comes first.



Marketing

The Gunnex Group is intensively involved in marketing and sales promotions as well as in relations with own clients. We provide our customers with system of samplers, leaflets and catalogs. We participate in exhibition and fairs.



THERMAL INSULATION SYSTEM - ETICS



FIBER GLASS REINFORCING MESH

VERTEX

Fiberglass mesh fabrics prevent cracks and protect the entire thermal insulation system from water infiltration and subsequent mold growth. In this way, the lifetime of thermal insulation systems is extended to the maximum. The fabric is alkali resistant.

R85 – reinforcement of interior plaster

R96 – reinforcement of interior plaster, reinforcement of facade

R117 – thermal insulation system, facade reinforcement, interior plaster reinforcement

R131 – thermal insulation system, facade reinforcement

R267 – base profile, high-stressed walls, reinforcement of facades and insulation systems

R275 – base profile, high-stressed walls

	R85	R96	R117	R131	R267	R275
eye brightness warp/weft (mm)	10/10	4,1/4,1	4/4,5	3,5/3,8	8,5/6,5	6/6
basis weight of treated fabric (g/m ²)	110	118	145	160	314	330
basis weight of gray fabric (g/m ²)	85	98	117	131	267	275
thickness of treated fabric (mm)	0,75	0,5	0,5	0,52	0,95	0,9
width/length of standard roll (m)	1/50	1/50	1 or 1,1/50	1 or 1,1/50	1/50	1/25
number of rolls on the standard palette	30	35	33	33	20	33
tensile strength under standard conditions warp/weft (N/5 cm)	1900/1600	2100/1600	2200/2000	2200/2000	2500/6300	4400/5300
elongation under standard conditions warp/weft (%)	3,5/4	3,5/3,5	3,8/3,8	3,8/3,8	4/4	4,5/4,5

* Logo printing available



■ ACCESSORIES FOR THE THERMAL INSULATION SYSTEM - ETICS

PVC BASE PROFILE

PVC foundation profile is used for accurate horizontal placement of thermal insulation boards in the ETICS thermal insulation system. At the same time, the profile prevents moisture from penetrating under the insulator. Another function of the profile is to protect the bottom of the ETICS contact thermal insulation system against the mechanical damage. The PVC foundation profile ensures a perfect construction and aesthetically finished ETICS insulation system. **PVC base profile secures a thermal bridge elimination.**

insulation thickness mm	pack pcs	pallet pcs
80	10	upon order
100	10	upon order
120	10	upon order
140	10	upon order
150	10	upon order
160	10	upon order
180	10	upon order
200	10	upon order

ALUMINIUM BASE PROFILE

Aluminum foundation profile is used for accurate horizontal placement of thermal insulation boards in the ETICS thermal insulation system. At the same time, the profile prevents moisture from penetrating under the insulator. Another function of the profile is to protect the bottom of the ETICS contact thermal insulation system against the mechanical damage. The Aluminum foundation profile ensures a perfect construction and aesthetically finished ETICS insulation system. Additional necessary materials when using AL base profiles are spacers, couplings and hammer anchors. To increase the water drainage in the vertical direction, it is necessary to use a gutter for base profile.

Thickness: 0,6 mm, length: 2,50 m

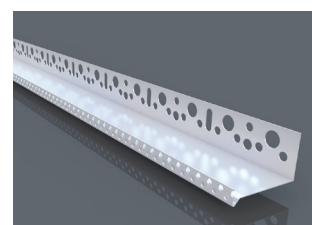
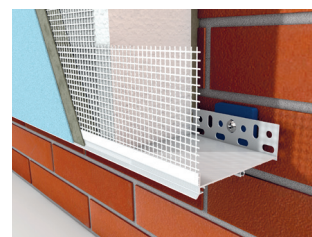
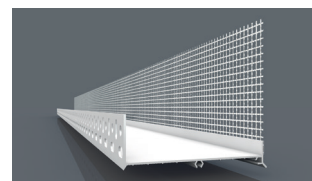
insulation thickness mm	pack pcs	pallet pcs
30	20	upon order
40	20	upon order
50	20	upon order
60	20	upon order
70	20	upon order
80	20	upon order
100	20	upon order
120	20	upon order

Thickness: 0,7 mm, length: 2,50 m

insulation thickness mm	pack pcs	pallet pcs
20	20	upon order
30	20	upon order
40	20	upon order
50	20	upon order
60	20	upon order
70	20	upon order
80	20	upon order
100	20	upon order
120	20	upon order
130	20	upon order
140	20	upon order
150	20	upon order
160	10	upon order
180	10	upon order
200	10	upon order

Thickness: 1,0 mm, length: 2,50 m

insulation thickness mm	pack pcs	pallet pcs
60	20	upon order
80	20	upon order
100	20	upon order
120	20	upon order
140	20	upon order
150	20	upon order
160	10	upon order
180	10	upon order
200	10	upon order
220	10	upon order
250	10	upon order



FIBER GLASS
REINFORCING MESH

ACCESSORIES FOR THE THERMAL
INSULATION SYSTEM - ETICS

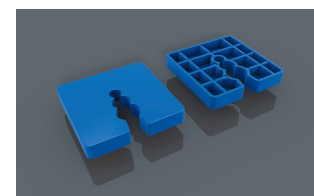
ANCHORING TECHNOLOGY
- FACADES ETICS

PROFILES
FOR INTERNAL PLASTER

SPACER FOR LEVELING THE SUBSTRATE ON THE SPOT

Spacer for leveling the substrate on the spot is designed for leveling the base profile at the anchoring point of the foundation profile with a building fastener in the ETICS contact insulation system. It is used for leveling of foundation profiles in contact thermal insulation, for leveling of wooden and steel gratings in thermal insulation of facades, for leveling of gratings in cladding of floorboards, plasterboard, as well as precise installation of windows, both wooden and plastic. The pad is made of PVC.

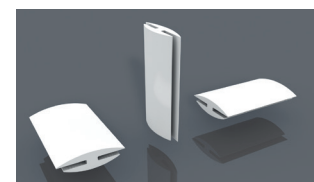
width mm	pack pcs	color
2	50	gray
3	50	red
4	50	green
5	50	yellow
8	50	blue
10	50	black
15	50	white



CONNECTOR FOR BASE PROFILE

UNI connector for base profile is intended for connection of foundation profiles in ETICS contact thermal insulation system.

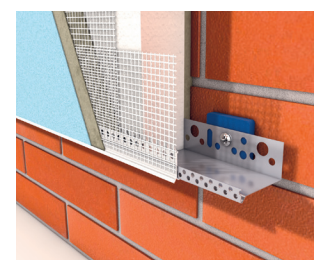
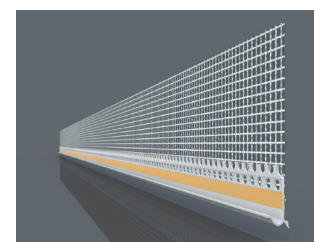
width mm	pack pcs
30	100
1000	10



GUTTER FOR BASE PROFILE WITH FIBERGLASS MESH

The use of the profile enables perfect finishing of the plaster in the lower foundation part of the ETICS construction. The shape of the profile ensures perfect water drainage from the system and prevents moisture from entering under the insulator. The profile minimizes crack formation at the bottom of the ETICS construction. This increases the quality and durability of the ETICS insulation system.

type	pack pcs	length m
with tape	50	2,50



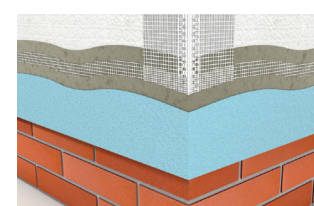
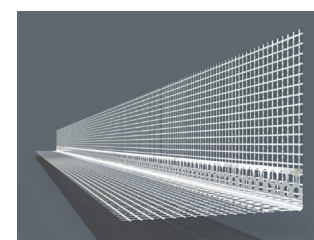
ALUMINIUM CORNER WITH FIBERGLASS MESH

The profile is designed to reinforce and protect all corners, edges, windows or door jambs in the ETICS contact thermal insulation system as well as to prevent hairline cracks.

type	dimension of the mesh	type of the mesh	length	packaging
GX AL 80/120	80 × 120 mm	VERTEX	2; 2,5; 3 m	50 pcs or upon order
GX AL 100/100	100 × 100 mm	VERTEX	2; 2,5; 3 m	50 pcs or upon order
GX AL 100/150	100 × 150 mm	VERTEX	2; 2,5; 3 m	50 pcs or upon order
GX AL 100/230	100 × 230 mm	VERTEX	2; 2,5; 3 m	25 pcs or upon order
GX AL 100/300	100 × 300 mm	VERTEX	2; 2,5; 3 m	25 pcs or upon order

**On demand it is possible to use the different type of the mesh and a printing on the mesh*

The available thickness of the ALUMINIUM CORNER is 0,28 – 0,4 mm and a dimension of an arms is 20 × 20; 22 × 22; 23 × 23 and 25 × 25 mm.

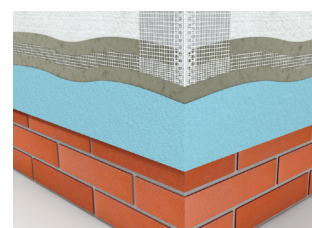
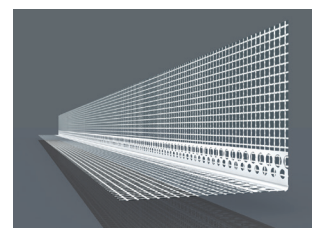


PVC CORNER WITH FIBERGLASS MESH

The profile is designed to reinforce and protect all corners, edges, windows or door jambs in the ETICS contact thermal insulation system as well as to prevent hairline cracks.

type	dimension of the mesh	type of the mesh	length	packaging
GX PVC 80/120	80 × 120 mm	VERTEX	2; 2,5; 3 m	50 pcs or upon order
GX PVC 100/100	100 × 100 mm	VERTEX	2; 2,5; 3 m	50 pcs or upon order
GX PVC 100/150	100 × 150 mm	VERTEX	2; 2,5; 3 m	50 pcs or upon order
GX PVC 100/230	100 × 230 mm	VERTEX	2; 2,5; 3 m	25 pcs or upon order
GX PVC 100/300	100 × 300 mm	VERTEX	2; 2,5; 3 m	25 pcs or upon order

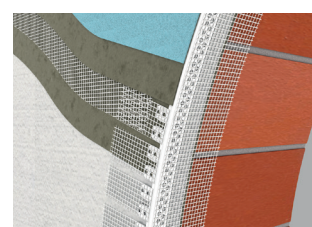
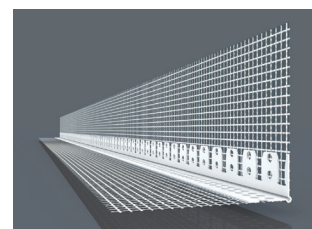
*On demand it is possible to use the different type of the mesh and a printing on the mesh



PVC ARCH CORNER WITH FIBERGLASS MESH Vertex

Its function is to create a precise arch as well as protection for interior plaster, plasterboard or gypsum fiber boards.

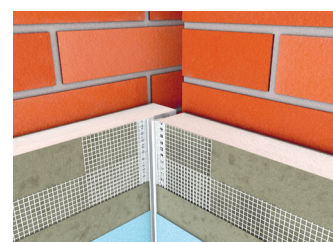
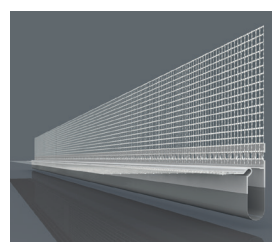
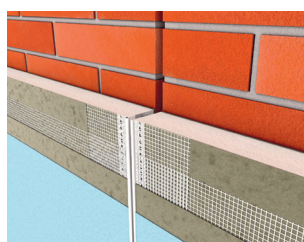
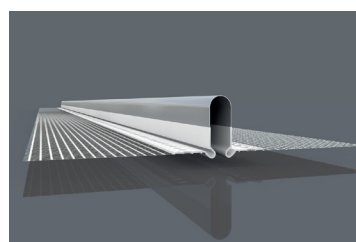
mesh width mm	length m	pack pcs
100/150	2,50	50



PVC DILATATION PROFILE WITH FIBERGLASS MESH Vertex

Expansion profile with fiberglass reinforcing fabric is designed to connect individual areas with a gap in the contact insulation system ETICS. Expansion gap is protected against weathering. The profile prevents moisture from entering under the insulator.

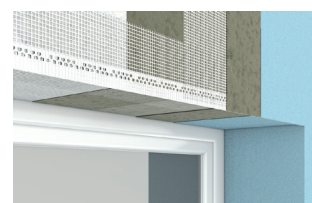
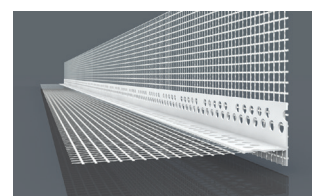
type	length m	pack pcs
straight	2,50	25
angular	2,50	25



PVC UNDERPLASTER PROFILE WITH EAVES

The profile with an unrecognized drip is designed for cleaning the plaster and securing water drainage on the upper lining of the building openings in the ETICS contact thermal insulation system. The profile can be used as a solution to the drip edge of balconies and terraces, also it protects corners.

type	length m	pack pcs
LT-L	2,50	30
LT-L	2,00	30
LT-I	2,50	30
LT-I	2,00	30



FIBER GLASS
REINFORCING MESH

ACCESSORIES FOR THE THERMAL
INSULATION SYSTEM - ETICS

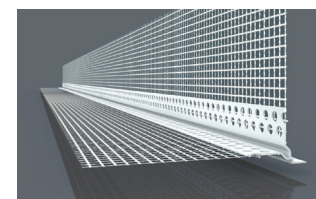
ANCHORING TECHNOLOGY
- FACADES ETICS

PROFILES
FOR INTERNAL PLASTER

PVC CORNER WITH EAVES WITH PROTECTION FOIL

The profile with a visible drip is designed for cleaning the plaster and securing water drainage on the upper lining of the building openings in the ETICS contact thermal insulation system. The profile can be used as a solution to the drip edge of balconies and terraces, also it protects corners.

type	length m	pack pcs
100/100	2,50	30

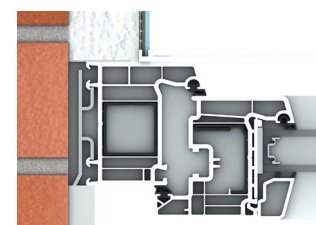
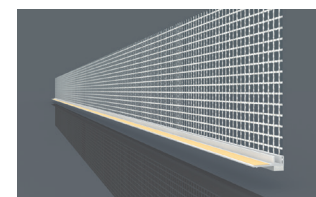


WINDOW PROFILE WITH FIBERGLASS MESH Vertex

Window profile with fiberglass mesh is used to create a safe and dilatary communication between the contact thermal insulation system and the window or door frame. The profile prevents scratching of window frames and staining of window panels, without sealing the window joints.

dimension mm	length m	pack pcs
6	1,60	50
6	2,10	50
6	2,40	50
9	2,40	20

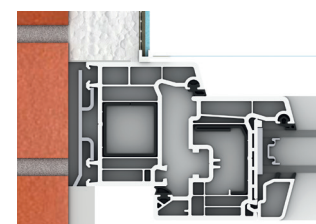
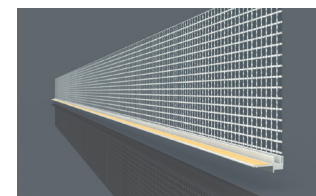
**On demand it is possible to produce different length*



WINDOW PROFILE WITH FIBERGLASS MESH Vertex AND COVERING PLATE

Window profile with covering plate and Vertex fabric for expansion joints of window or door frame with plaster in ETICS contact thermal insulation system.

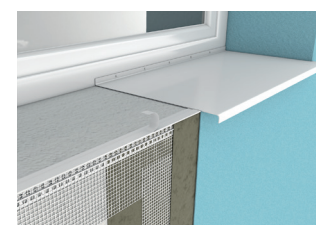
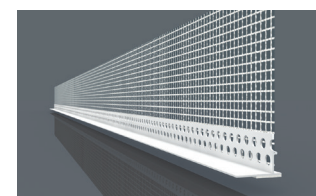
dimension mm	length m	pack pcs
6	2,40	30



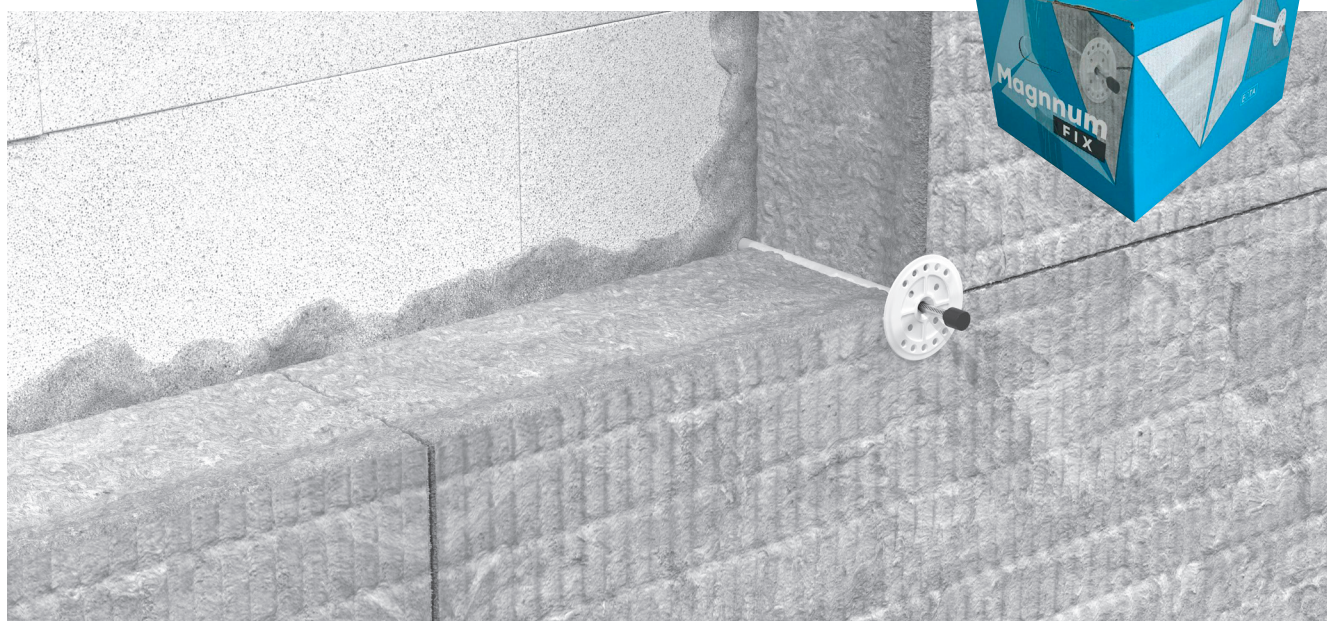
WINDOW SILL PROFILE

Window sill profile with mesh and PE foam. The profile enables merging of the sill profile with the thermal insulator in the ETICS contact thermal insulation system. The profile eliminates cracks between the sill and the plaster due to the thermal expansion of the materials (plaster, plastic, steel, copper, etc.). The profile minimizes the occurrence of cracks caused by mechanical stress.

overlap mm	length m	pack pcs
100	2,00	20



ANCHORING TECHNOLOGY – FACADES ETICS

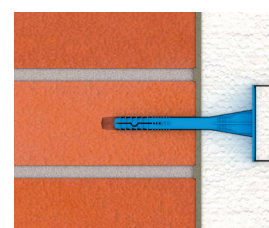


MAGNUM FIX 3A – INSULATED DOWEL PLATE WITH PLASTIC PIN

Insulated dowel plate MAGNUM FIX 3A is intended for anchoring of light insulations, polystyrene in the technology of thermal insulation of buildings with a base of concrete, solid brick and stone. **Anchoring depth 45 mm.** The possibility of enlarging the dowel head in combination with the T-01 anchor plates, used especially for anchoring of EPS thermal insulation. The amount of dowels per m² is determined by the project documentation according to the height of the building, weather conditions in the area or contact thermal insulation system in which the dowel is used 4, 6, 8 pieces/m² applies. The body is a specially composed polypropylene copolymer. The pin is a polyamide reinforced by glass fiber.

product code	dimension mm	pack pcs
115.3A70	10 × 70	400
115.3A90	10 × 90	200
115.3A110	10 × 110	200
115.3A120	10 × 120	200
115.3A140	10 × 140	200
115.3A150	10 × 150	200
115.3A160	10 × 160	200
115.3A170	10 × 170	200
115.3A180	10 × 180	200
115.3A190	10 × 190	200
115.3A200	10 × 200	200
115.3A220	10 × 220	200
115.3A240	10 × 240	200
115.3A260	10 × 260	200

CE



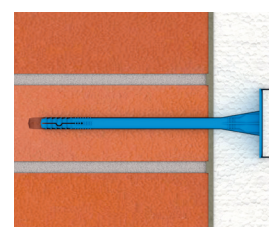
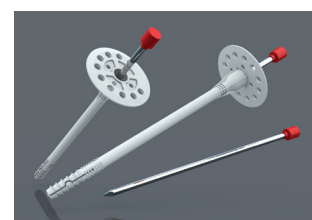
ETA 08/0204

MAGNUM FIX 3AMT – INSULATED DOWEL PLATE WITH METAL PIN AND PLASTIC PLATE

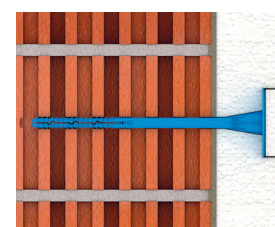
Insulated dowel plate MAGNUM FIX 3AMT is intended for anchoring of mineral wool in the technology of thermal insulation of buildings with a base of concrete, solid brick and stone. **Anchoring depth 45 mm.** The possibility of enlarging the dowel head in combination with the T-01 anchor plates, used especially for anchoring mineral wool thermal insulation. The amount of dowels per m² is determined by the project documentation according to the height of the building, weather conditions in the area or contact thermal insulation system in which the dowel is used 4, 6, 8 pieces/m² applies.

product code	length mm	pack pcs
115.3AMT90	10 × 90	200
115.3AMT110	10 × 110	200
115.3AMT120	10 × 120	200
115.3AMT140	10 × 140	200
115.3AMT150	10 × 150	200
115.3AMT160	10 × 160	200
115.3AMT170	10 × 170	200
115.3AMT180	10 × 180	200
115.3AMT190	10 × 190	200
115.3AMT200	10 × 200	200
115.3AMT220	10 × 220	200
115.3AMT240	10 × 240	200
115.3AMT260	10 × 260	200

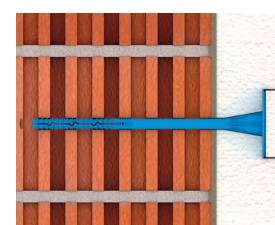
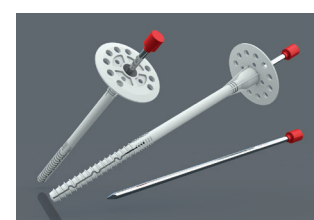
CE



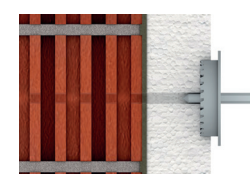
ETA 08/0204



ETA 09/0372



ETA 09/0372



MAGNUM FIX 3AL – INSULATED DOWEL PLATE WITH PLASTIC PIN

The pin is a polyamide reinforced by glass fiber. Insulated dowel plate is intended for anchoring of thermal insulation into hollow and slit bricks. **Anchoring depth 80 mm.** Possibility of plug expansion in combination with T-03 plate. The amount of dowels per m² is determined by the project documentation according to the height of the building, weather conditions in the area or contact thermal insulation system in which the dowel is used, generally anchoring of 4, 6, 8 pieces/m² applies. The body is a specially composed polypropylene copolymer.

product code	length mm	pack pcs
115.3AL160	10 × 160	200
115.3AL180	10 × 180	200
115.3AL200	10 × 200	200
115.3AL220	10 × 220	200
115.3AL220	10 × 260	200

MAGNUM FIX 3 ALMT - INSULATED DOWEL PLATE WITH METAL PIN AND PLASTIC PLATE

Insulated dowel plate is intended for anchoring of thermal insulation into hollow and slit bricks. **Anchoring depth 80 mm.** Possibility of plug expansion in combination with T-03 plate. The amount of dowels per m² is determined by the project documentation according to the height of the building, weather conditions in the area or (contact thermal insulation system) in which the dowel is used, generally anchoring of 4, 6, 8 pieces/m² applies.

product code	length mm	pack pcs
115.3ALMT160	10 × 160	200
115.3ALMT180	10 × 180	200
115.3ALMT200	10 × 200	200
115.3ALMT220	10 × 220	200
115.3ALMT260	10 × 260	200

THERMAL INSULATING PLATE

type	diameter mm	pack pcs
T-01	85	500
T-03	85	500
T-01	140	100

INSULATING PLUG - MINERAL WOOL

They are used to cover the plate fastener for countersunk installation.

diameter mm	pack pcs
65	100

INSULATING PLUG – EPS

They are used to cover the plate fastener for countersunk assemblage.

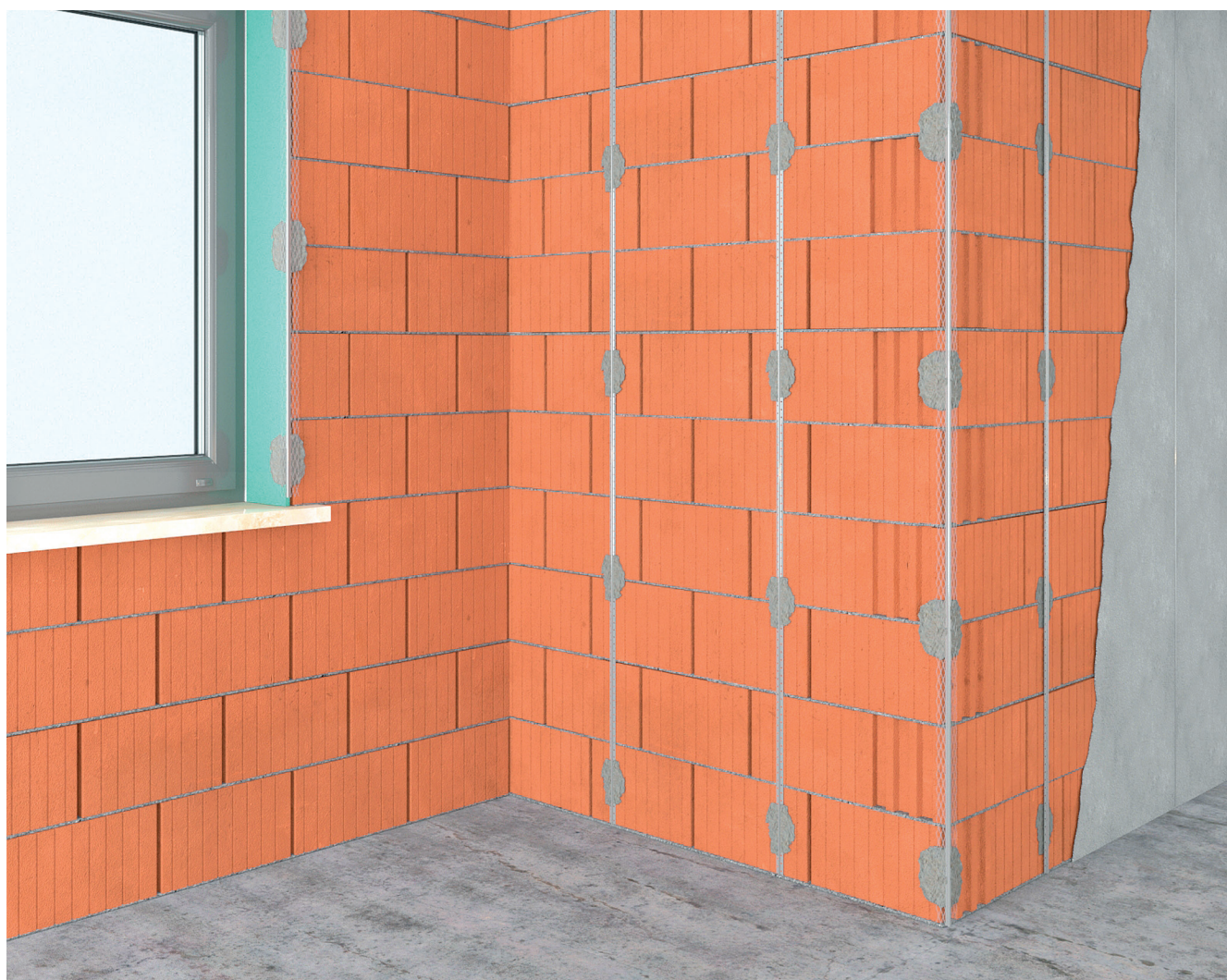
diameter mm	color	pack pcs
67	white	200
67	gray	200

CUTTER FOR THERMAL INSULATION SYSTEM

The assemblage set pre-cuts the fastener and then constrict it.

type	diameter mm	material	pack pcs
Metal	65	EPS, MW	1
Metal	64	EPS, MW	1
PVC	67	EPS	1

PROFILES FOR INTERNAL PLASTER



FIBER GLASS
REINFORCING MESH

ACCESSORIES FOR THE THERMAL
INSULATION SYSTEM - ETICS

CORNER PROFILE FOR INTERNAL PLASTER

Protective concealed profile is used primarily for interior plasters, where its function is to protect and create a precise corner. The profile is set at the corresponding corner height and fixed to the plaster thickness. The profile is designed especially for machine plasters.

diameter mm	length m	pack pcs
34 × 34	2,50	25
34 × 34	2,60	25
34 × 34	2,75	25
34 × 34	3,00	25
50 × 50	2,50	20
50 × 50	2,60	20
50 × 50	2,75	20
50 × 50	3,00	20

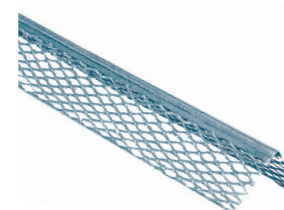


ANCHORING TECHNOLOGY
- FACADES ETICS

CORNER PROFILE FOR INTERNAL PLASTER SOFT

Protective concealed profile is used primarily for interior plasters, where its function is to protect and create a precise corner. The profile is set at the corresponding corner height and fixed to the plaster thickness. The profile is designed especially for machine plasters.

diameter mm	length m	pack pcs
32 × 32	2,50	25
32 × 32	3,00	25



PROFILES
FOR INTERNAL PLASTER

GALVANIZED PROFILE W6 and W10

Quick-blower is used for interior plasters. It enables a precise application of plaster in the required thickness. During mounting process it must be ensured that the profile is fixed vertically. When turning plasters, it is important to turn the trowel transversely across the render, not longitudinally, and the edge of the plaster may rise to the surface. It is used as an element that regulates thickness of the plaster as well as a dilatation bead and leading bead for flooring. This profile can't be used in high wetness and acidity environments for example: with gypsum plaster.

diameter mm	length m	pack pcs
6	2,50	25
6	2,60	25
6	2,75	25
6	3,00	25
10	2,50	25
10	2,60	25
10	2,75	25
10	3,00	25



PVC WINDOW PROFILE WITHOUT MESH

Profile for flexible connection of window or door frame with interior plaster. Aesthetically perfect cleaning and bonding of the plaster to the frames of the building, opening fillings, without cracks. A snap-off strip with adhesive tape for the cover foil prevents damage and entering of dirt to the frame or glass. At the same time, the profile prevents cold penetration. When using this profile, joint sealing is not necessary.

diameter mm	length m	pack pcs
6	2,40	50
9	2,40	30

**On demand it is possible to produce different length*



PVC CORNER WITHOUT MESH

Protective concealed profile for protection, strengthening and shaping corners and edges of the object. The advantage of using the profile is strengthening of corners without creating bumps.

type	diameter mm	length m	pack pcs
profiled	23 × 23	2,50	50
basic	23 × 23	2,50	50



ALUMINIUM CORNER WITHOUT MESH

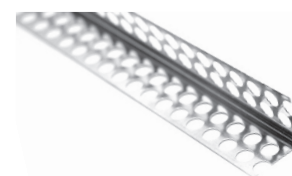
Profile for protecting, strengthening and shaping corners and edges of an object. The advantage of using the profile is strengthening of corners without creating bumps.

On request Aluminium thickness: 0,27 – 0,40 mm

Standard items:

thickness mm	diameter mm	length m	pack pcs
0,29	20 × 20	2,00	200
0,29	20 × 20	2,50	200
0,29	20 × 20	3,00	200
0,30	22 × 22	2,00	200
0,30	22 × 22	2,50	200
0,30	22 × 22	3,00	200
0,35	22 × 22	2,00	200
0,35	22 × 22	2,50	200
0,35	22 × 22	3,00	200

**On demand it is possible to produce different length and diameter 23 × 23 and 25 × 25*



ALUMINIUM CORNER WITHOUT MESH 135°

Protective profile for strengthening and shaping blunt corners. This corner is used to protect the joints between the plasterboards from cracking as well as to obtain the required straightness with 135 degrees angle.

thickness mm	diameter mm	length m	pack pcs
0,30	23 × 23	2,50	50
0,30	23 × 23	3,00	50



ALUMINIUM HALF – CORNER WITHOUT MESH

The half corner is used to protect and finish cut edges of plasterboards.

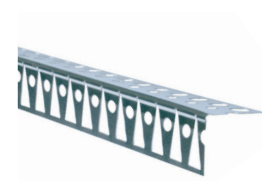
thickness mm	diameter mm	length m	pack pcs
0,30	22/12	2,50	50
0,30	22/12	3,00	50



ALUMINIUM ARCH CORNER

The aluminium arch corner is designed for reinforcing and shaping the edges of arches of different radii.

thickness mm	diameter mm	length m	pack pcs
0,30	23/23	2,50	25



PVC ARCH CORNER

The PVC arch corner is designed to protect the edges of arches of different radii.

thickness mm	diameter mm	length m	pack pcs
0,30	23/23	2,50	50
0,30	23/23	3,00	50



PLASTERBOARD PROFILE

The edging profile is used for finishing and protecting the edge of plasterboards without further sealing.

diameter mm	length m	packing pcs
12,50	2,50	50
12,50	3,00	50

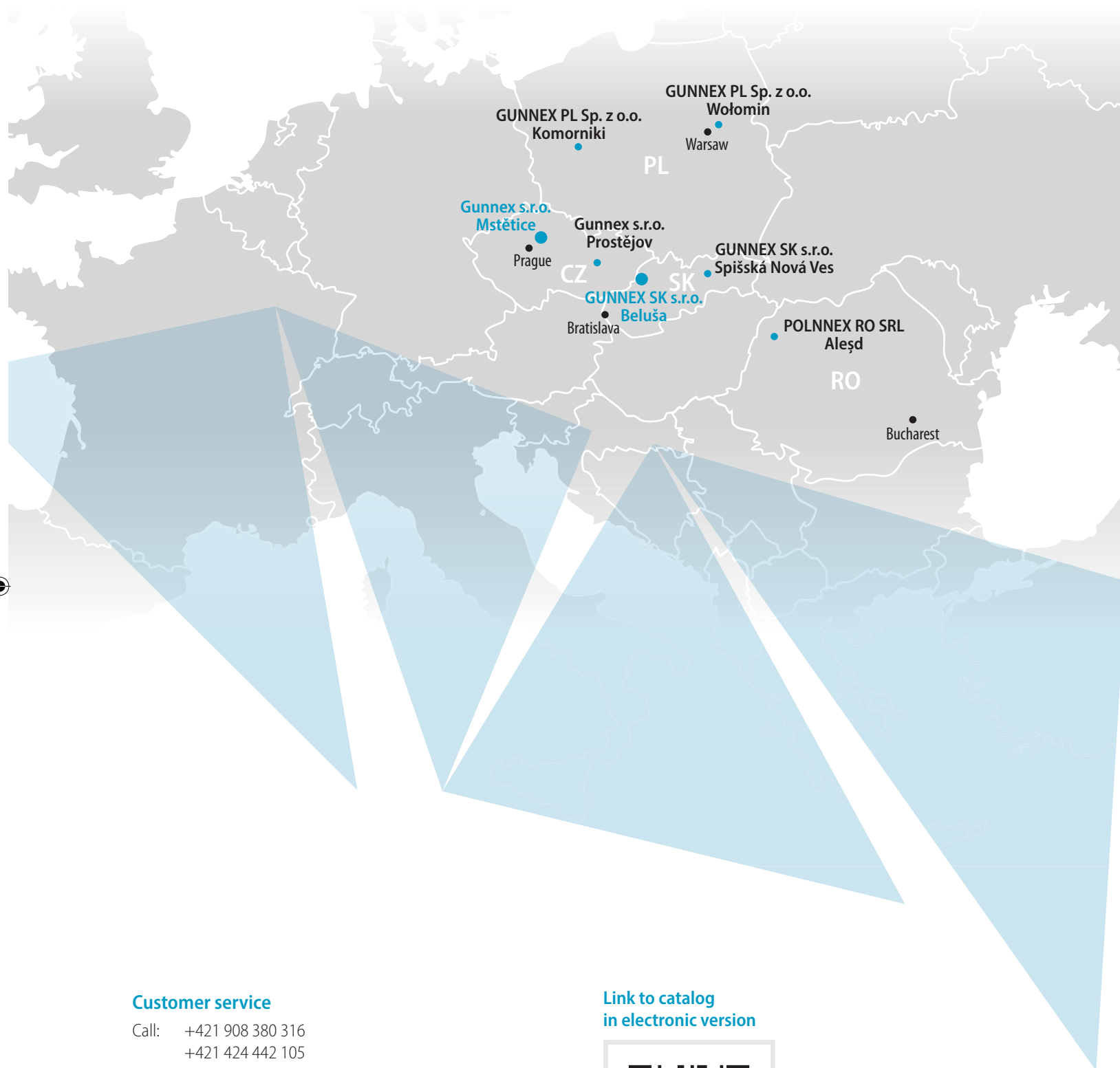


FIBER GLASS
REINFORCING MESH

ACCESSORIES FOR THE THERMAL
INSULATION SYSTEM - ETICS

ANCHORING TECHNOLOGY
- FACADES ETICS

PROFILES
FOR INTERNAL PLASTER



Customer service

Call: +421 908 380 316
+421 424 442 105

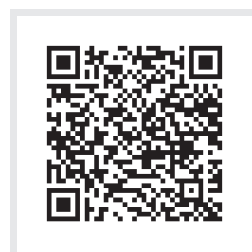
Email: info@gxprofiles.com

Sales manager

Call: +421 905 202 787

Email: gxprofiles@gxprofiles.com

Link to catalog
in electronic version



www.gxprofiles.sk

The images and the photos used in this document are protected by copyright and it is not possible to copy them without a permission of the Gunnex company.